



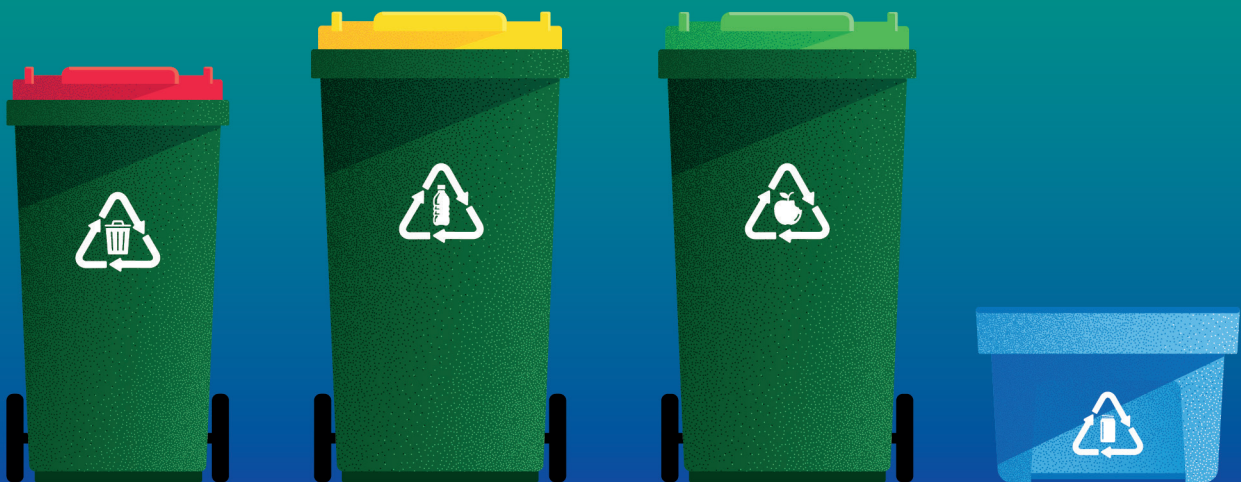
---

# Draft Waste Management and Minimisation Plan 2024-2030

## Consultation Document

---

Submissions close 9am on Monday 1 July 2024



**Waimate**  
District Council

# INTRODUCTION

The Draft Waste Management and Minimisation Plan sets out the direction for the Waimate District in relation to waste activities for the next six years. The plan is a guiding document which identifies Council's vision, goals, objectives, targets and methods for achieving effective and efficient waste management and minimisation.

The Waste Minimisation Act 2008 requires Council to complete a full review of its Waste Management and Minimisation Plan every six years. The Act requires Council to seek public feedback on its plan through the Special Consultative Procedure (as set out in the Local Government Act 2002), which gives the public an opportunity to make submissions and provide feedback.

In addition to the legislative framework within which the plan has been developed, it has also been created in the context of the New Zealand Waste Strategy 2023 (NZWS). The NZWS sets out the long-term policy priorities for waste management and minimisation.

In preparing the plan, Council developed a Joint Waste Assessment with Mackenzie and Timaru District Councils. It provides detail on existing waste services and facilities provided within South Canterbury and an assessment of options to address identified issues for each district. Additionally, the three councils have entered into individual waste management and minimisation contracts with EnviroNZ.

This consultation document has been prepared to seek community input into Council's Draft Waste Management and Minimisation Plan 2024-2030 and explore ideas to realise our vision for the future of waste management within our region.

Our vision for the future of waste management is that:

“By 2050, the South Canterbury Region is a low-emissions, low-waste society built upon a circular economy.”

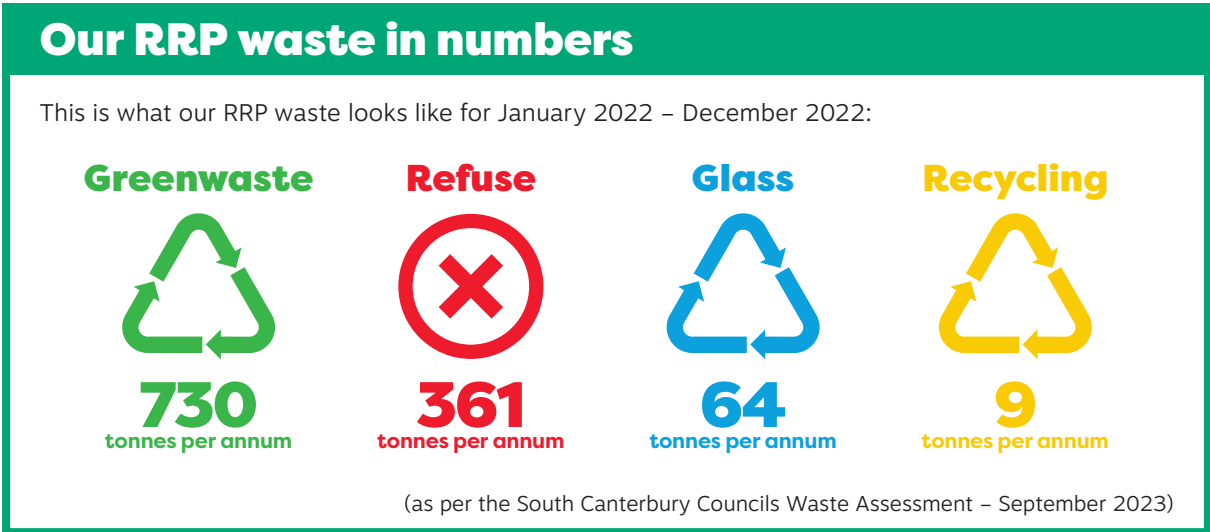


# OUR WASTE IN NUMBERS

Council currently provides kerbside collections in Waimate and several rural locations. This includes fortnightly kerbside collections for refuse and mixed recycling, with weekly kerbside collections of organics and glass.



The Resource Recovery Park (RRP) is used by residents and small commercial customers to dispose of general refuse and drop off recyclables, scrap metal, whiteware, tyres, e-waste, and other recoverable material for further processing. It also enables efficient waste services for the community, including those that do not have access to kerbside services, such as rural households.



# WHAT ARE WE PROPOSING?

Waimate District has already achieved high levels of recycling and organic diversion, surpassing national targets well ahead of time. We were able to do this because of the support from our community in implementing the required changes proactively. We need to build upon that success by bringing more stakeholders along on our journey.

Council is proposing ambitious waste minimisation targets for 2030 to align with the NZWS:

NZWS target	Local annual target (kg per capita, tonnes, %)	Waimate District Council	
		Baseline 2022	Target 2030
10% reduction in waste generation	Total kerbside material	431kg per capita <sup>1</sup>	388kg per capita
	Total material received RRP's	1,400 tonnes	<1,400 tonnes
30% reduction in final disposal	Kerbside refuse collection	112kg per capita <sup>2</sup>	78kg per capita
	% contamination in kerbside organics, glass and recycling	Organic <1% Glass <1% Recycling 3%	Organic <1% Glass <1% Recycling <10%
	Redruth Landfill disposal from RRP's <sup>3</sup>	360 tonnes	250 tonnes
30% reduction in biogenic methane emissions	% total organics in kerbside rubbish collection	40%	25%

<sup>1</sup> Calculation of kg per capita is based on estimate of service entitled population.

<sup>2</sup> From January-December 2022.

<sup>3</sup> Based on 2022 data at Redruth Landfill. Tonnage covers all disposable materials via councils' facilities.



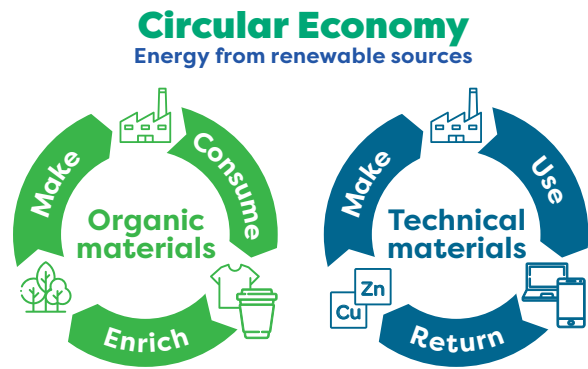
# How do we get there?

Through the assessment of waste within the region, Council has identified four opportunities to address issues with our waste:

## 1. Promote upstream waste hierarchy and circular economy principles

A ‘circular economy’ is a system where extracted materials are used and reused for as long as possible. For technical or synthetic materials, the ideal scenario is that they are reused forever. Organic materials will eventually be returned to the soil to enrich it.

To encourage behavioural change and support the community to develop their own initiatives, there are opportunities for Council to strengthen its public awareness campaigns such as through its education provided by EnviroNZ.



## 2. Recover more from kerbside waste streams

A waste audit in the district in 2022 showed that more than a third of our refuse could be diverted from landfill, mostly organics.

## 3. Better service to rural and business customers

Some rural and business customers do not currently have access to a comprehensive four-stream collection service like urban residents.

There is an opportunity to divert more by looking at enabling access to similar levels of service.

## 4. Support diversion activities for construction & demolition (C&D) waste from landfill

Residual waste from Waimate, including C&D waste, is taken to Redruth Landfill in Timaru for disposal. Council will investigate sub-regional C&D waste recovery options, while working with local C&D businesses to develop and deliver targeted education programmes to promote awareness of how to divert waste.

Council has identified three methods of bringing about the changes required to make the most of the above opportunities:

1. Influencing behaviours
2. Provision of waste services and facilities
3. Regulating how waste services are provided.

# SUPPORTING INFORMATION

The full Draft Waste Management and Minimisation Plan 2024-2030 can be found on Council's website at [waimatedc.govt.nz/wmmp](http://waimatedc.govt.nz/wmmp)

The plan is split into three parts:

## PART A The Strategy

Contains core elements; vision, goals, objectives, and targets. It sets out what we are aiming to achieve and the broad framework for working towards the vision.

## PART B Action Plan

Sets out the proposed actions to be taken to achieve the goals, objectives, and targets set out in Part A.

Part B also shows how we will monitor and report on our actions and how they will be funded.

## PART C Supporting Information

Contains the background information that has informed the development of our Waste Management and Minimisation Plan (WMMP). Most of this information is contained in the Joint Waste Assessment (WA).

## KEY DATES

- Tuesday 28 May to 9am Monday 1 July**  
Community consultation – when we want to hear from you
- Tuesday 9 July**  
Submission hearings – your chance to talk about what you've told us  
Decisions – Mayor and Councillors consider all the feedback from the community
- Wednesday 10 July**  
Letting you know what the Mayor and Councillors decided

### → How do I make a submission?

**All submissions must be received by 9am on Monday 1 July 2024**

**Online:** [waimatedc.govt.nz/wmmp](http://waimatedc.govt.nz/wmmp)

**Email:** Scan and email your submission to [submission@waimatedc.govt.nz](mailto:submission@waimatedc.govt.nz)  
(*Submission: Draft WMMP 2024-2030* in subject field)

**Post:** Submission: Draft WMMP 2024-2030,  
Waimate District Council,  
PO Box 122, Waimate 7960

**Deliver:** To Council reception,  
125 Queen Street,  
Waimate

# Draft Waste Management and Minimisation Plan 2024-2030

# SUBMISSION FORM

## Personal details

First name \_\_\_\_\_ Last name \_\_\_\_\_

Organisation \_\_\_\_\_

Postal address \_\_\_\_\_

Home phone \_\_\_\_\_ Mobile \_\_\_\_\_

Email \_\_\_\_\_

## Privacy

A full copy of all submissions will be made publicly available.  
Would you like your contact details withheld?

Yes  No

## Speak to your submission

Do you wish to speak to your submission  
at the Submission Hearing on Tuesday 9 July 2024?

Yes  No

If yes, please ensure your daytime phone number is recorded above so we can contact you to arrange a suitable time.

## Your feedback

1. Do you support the Draft Waste Management  
and Minimisation Plan 2024-2030 as presented?

Yes  No

Tell us why \_\_\_\_\_  
\_\_\_\_\_  
\_\_\_\_\_  
\_\_\_\_\_

2. What changes, if any, would you like to see to what is proposed?

\_\_\_\_\_  
\_\_\_\_\_  
\_\_\_\_\_  
\_\_\_\_\_

Need more room? You can add extra pages if there's not enough space on this form.



125 Queen Street, Waimate 7924  
PO Box 122, Waimate 7960  
Phone: 03 689 0000  
E-mail: [council@waimatedc.govt.nz](mailto:council@waimatedc.govt.nz)  
Web: [waimatedc.govt.nz](http://waimatedc.govt.nz)

