



Emergency
Management
Waimate



Hakataramea/Cattle Creek

Civil Defence Emergency Management COMMUNITY RESPONSE PLAN

Effective from February 2022



Waimate
District Council



NEW ZEALAND
POLICE
Ngā Pirihimana o Aotearoa



Hakataramea/Cattle Creek

Civil Defence Emergency Management COMMUNITY RESPONSE PLAN



Special acknowledgment to Hakataramea Sustainability Collective, community representatives, local Police and the Cattle Creek Volunteer Fire Brigade for their support in compiling the information for the Hakataramea/Cattle Creek Civil Defence Emergency Management Community Response Plan.

The plan

This plan includes information on your community, hazards in your area, being prepared, response procedures, communication systems, Fire and Emergency NZ (FENZ) support, your CDEM community representatives, the review process and a topographical map of your area.

Community profile

The Hakataramea and Cattle Creek area is a combination of plains, rolling hills and steep hill country. The area runs from the north bank of the Waitaki River and the Hakataramea township in the south to the Hakataramea Pass in the north. It is bounded in the west by the Kirkliston Range and the nearby Hunter Hills. The Hakataramea River running through the centre of the valley from top to bottom and the Waitaki River along with the northern shores of lakes Aviemore and Waitaki are the significant waterways within the area.

The prime economic activity in this area is agriculture, with both extensive and intensive sheep and beef farming, dairy farming and cropping all occurring. The area also includes Council-operated campgrounds

along the shores of Lake Aviemore, helping to boost the population of the area over the summer months. The main town of Kurow located in North Otago is where the nearest fuel station, primary school and supermarket is located.

There is one main road running up to the Hakataramea Valley on the western side of the river. There are sealed and unsealed side roads off this road providing access to different areas of the valley, however the side roads are not all interconnected leaving the main road as a trunk line. There are four separate bridges crossing over the Hakataramea River - two at the top end and two at the bottom end. The upper lake area is accessed bypassing over either the Aviemore Dam or the Benmore Dam.








It is understood cellphone reception and coverage is limited throughout the district, particularly at the upper end of the valley.

Total population of Hakataramea/Cattle Creek was 831 in 2018, as per NZ 2018 Census Statistics.

Waimate District risk profile

The risk profile is based on the likelihood of an event happening in the next 20-50 years, the consequences/ impact of the event and how easy or hard it is to manage. For instance, the earthquake threat is at the top of the list as it has the greatest impact, whilst flooding is ranked lower because the impact is deemed moderate.

The risk profile contained in this plan reflects some issues specific to your area. The data for this profile comes from the Canterbury CDEM Group Plan (adopted June 2014).

THREAT	WARNING AGENCY	LIKELIHOOD	CONSEQUENCE	IMPACT ON COMMUNITY	RESPONSE
EARTHQUAKE 	None	Possible	Major	<ul style="list-style-type: none"> • Loss of life/injuries • Damage to property or homes • Loss of power • Loss of telephone • Road access denied 	<ul style="list-style-type: none"> • Drop, cover and hold • Long or Strong GET GONE • Stay in buildings, unless fire present • If driving, pull over and stay in car • Turn on radio
HUMAN DISEASE PANDEMIC 	Ministry of Health	Likely	Major	<ul style="list-style-type: none"> • Loss of life • Restricted movement • Economic losses 	<ul style="list-style-type: none"> • Follow Ministry's advice
ANIMAL DISEASE PANDEMIC 	Ministry for Primary Industries	Likely	Moderate	<ul style="list-style-type: none"> • Loss of live stock • Restricted movement • Economic losses 	<ul style="list-style-type: none"> • Follow Ministry's advice
FLOODING (RAINFALL) 	MetService ECAN	Almost certain	Moderate	<ul style="list-style-type: none"> • Loss of live stock • Road access denied • Landslips • Damage to property or homes 	<ul style="list-style-type: none"> • Move stock • Keep feed safe • Check fuel supplies • Limit movement until water recedes
SNOW 	MetService	Almost certain	Moderate	<ul style="list-style-type: none"> • Loss of livestock • Loss of communications • Restricted movement • Economic losses 	<ul style="list-style-type: none"> • Limit travel • Move stock • Keep feed safe • Check fuel supplies • Contact Rural Support Trust for support
TSUNAMI 	National Emergency Management Agency	Low	Locally insignificant but nationally significant	<ul style="list-style-type: none"> • Coastal and river inundation • Travel disruption • Disruption to lifelines e.g. fuel, communication, food supplies 	<ul style="list-style-type: none"> • Activate evacuation plan if you live in evacuation zone • Turn on radio
WILDFIRE/ RURAL FIRE 	FENZ	Likely	Minor*	<ul style="list-style-type: none"> • Loss of life • Damage to property and homes • Loss of livestock • Restricted movement 	<ul style="list-style-type: none"> • Follow evacuation notices • Turn on radio • Move stock

* Assessment from FENZ of rural fire is that it would be likely with minor impact, but under extreme weather conditions rural fire would be likely but potential for moderate impact.

ADDITIONAL THREATS:

Drought, cyclones/wind, coastal erosion.

Community strengths, weaknesses, opportunities and threats analysis

Strengths

- Lots of barbecues
- Good diesel and petrol supplies on farms
- Good community facilities - Cattle Creek Hall, Waitaki Gun Club
- Lots of local resources and skills, including trained first aiders and other health professionals and strongly attended volunteer fire brigade at Cattle Creek
- Access to heavy machinery on farms, excavators, graders, snow ploughs, chainsaws, tractors, trailers, motorbikes, quad bikes. Farms have pipe and water fittings that could be used for emergency repairs
- Strong local community network and support
- Generators
- Most farms have tank water and many streams/ivers from the hills to provide both boilable or industrial amounts of fresh water
- Campgrounds do not provide power so when there are people in these areas they have their own facilities
- On farm two-way radios are common to aid in communications

Weaknesses

- Limited cellphone reception
- Some homes rely on heat pumps or pellet fires for heating in winter, which requires electricity
- The campgrounds which are only operational in the summer are hard to track population wise at any one time
- Although there are multiple entry and exit routes to the valley, these are all susceptible to damage in different conditions
- Main Hakataramea Valley road is a trunk line with side roads not connecting
- No known local air support (helicopter)

Opportunities

- Rural community very active during times of stress to support response (see Threats)
- Plenty of higher ground
- General remoteness of the community means that individuals are mostly well equipped to handle several days of isolation

Threats

- Multiple fords prone to flooding
- Lake Aviemore campgrounds and surrounding areas are disconnected to the Hakataramea Valley by river and mountains.



Being prepared

In a large-scale emergency, Waimate District Council has a coordination role but, by the very nature of the event, much of the response relies heavily on the community and their self-resilience. When disaster strikes, people will naturally prioritise their own families before being able to respond to neighbours and the wider community.

In addition, because of possible travel disruption it could be several days before assistance arrives; hence the importance of being prepared for a minimum of

72 hours. The more we can do to prepare, the better shape we are in to support our neighbours, our community and ourselves.

If there is widespread damage to communication networks, make sure you have a battery powered radio or car radio available to hear information.

Go to www.getready.govt.nz for more information about creating your own personal and business emergency plans and getaway kits.

CDEM community representatives

Peter Cleave and Fiona Bowmar are the CDEM community representatives for their respective areas.

The primary function of community representatives is as communicators; they extend the eyes and ears of Waimate District Council (WDC) CDEM into each area of the district. They report on localised conditions and carry instructions from WDC CDEM out to the community. If necessary, they undertake coordination of the initial response.

COMMUNITY REP	ADDRESS	PHONE/EMAIL	AREA COVERED
Peter Cleave	698 Milne Road, Hakataramea	027 278 9971 hakupete@hotmail.com	Hakataramea - lower area
Fiona Bowmar	645 Hakataramea Pass Road	03 436 0028 / 027 235 5142 bowmarhouse@hotmail.com	Cattle Creek - upper area

Listed below are the substitute representatives for the Hakataramea/Cattle Creek area.

The substitute representatives liaise with either community representatives or directly with WDC CDEM if community representatives are not available.

SUB REP	ADDRESS	PHONE/EMAIL	AREA COVERED
Aaron Bell	Moorland Settlement Road	03 436 0132 / 0274 360 004 Aaron.em.bell@xtra.co.nz	Cattle Creek - upper area
Wallace Milne	Invercoy Station, Highland Farm Settlement Road	03 436 0155 / 027 321 5043 walmilne@hotmail.com	Cattle Creek - upper area
Ben Scott	Hakataramea Pass Road	027 309 0693 Brscott21@hotmail.co.nz	Cattle Creek - upper area
Jane Neave	290 Hakataramea Valley Road	janeneave@slingshot.co.nz	Hakataramea - lower area
Juliet Gray	Invercoy Hakataramea Station	03 436 0735 / 021 677 342 Juliet.richard@xtra.co.nz	Hakataramea area



FENZ (Fire and Emergency New Zealand)

Hakataramea/Cattle Creek is covered in the first instance by the Cattle Creek Volunteer Fire Brigade. The Cattle Creek Volunteer Fire Brigade has a fire engine and water tanker based at Cattle Creek Hall. Wallace Milne is the current chief and its members are mainly Cattle Creek residents.

These members have completed first aid modules, along with regular refresher courses. There is good radio communication at the base within the fire engine. WDC CDEM will call upon this volunteer group if required.

NZ Police

Senior Constable Peter Scott is based at 29 Bledisloe Street, Kurow, and can be contacted on 03 436 0807 or 021 192 3851. Peter covers the wider Kurow area.

CALL 111

EMERGENCY
Ohotata

POLICE

USE 105

NON-EMERGENCY
Ohotata Kore

Call 105 or go online to
105.police.govt.nz

Early stages of emergencies

If an event is beginning to develop, for example, rivers are rising - contact your community representative or substitute representative to report your concerns/ observations. If no response, send information directly to the **WDC CDEM duty officer** on **03 689 0000**.

Road signage

WDC emergency road signage has been provided to the Hakataramea/Cattle Creek community representatives.

If the signage is to be utilised the **WDC Roading team (03 689 0000)** are to be advised of the location and issue.

Response to an emergency

If you do not require immediate emergency assistance check on your families, your neighbours and where possible, report to the community representative for your area. Reports should include:

- ✓ **Your situation**
- ✓ **Who you have checked on and when**
- ✓ **Damage to property and/or infrastructure: roads/bridges/approaches, telephone and power supplies, water supplies and waste water reticulation**
- ✓ **Requests for support (e.g. food, water, shelter)**
- ✓ **Any other significant factors**

The community representatives will collate the information and forward to the Emergency Operations Centre in Waimate.

Following these lines of communication means the response can be coordinated efficiently and priorities can be set to meet the community needs across the wider Waimate District.

Evacuation plan

In the unlikely event that evacuation is required the public will be alerted by natural signals (long or strong earthquake), broadcast radio, and emergency mobile alert - Police or FENZ. (See back page for more public alerting information.)

Instructed by Police, FENZ or Waimate District Council, move to the Cattle Creek Hall or Waitaki Gun Club for evacuations, unless instructed to evacuate elsewhere.

THE CATTLE CREEK HALL AND WAITAKI GUN CLUB MAY NOT BE IMMEDIATELY ACTIVATED FOR EVACUATIONS SO BE PREPARED TO SHELTER AT HOME FOR AN EXTENDED PERIOD OF TIME IF POSSIBLE.

Emergency communication

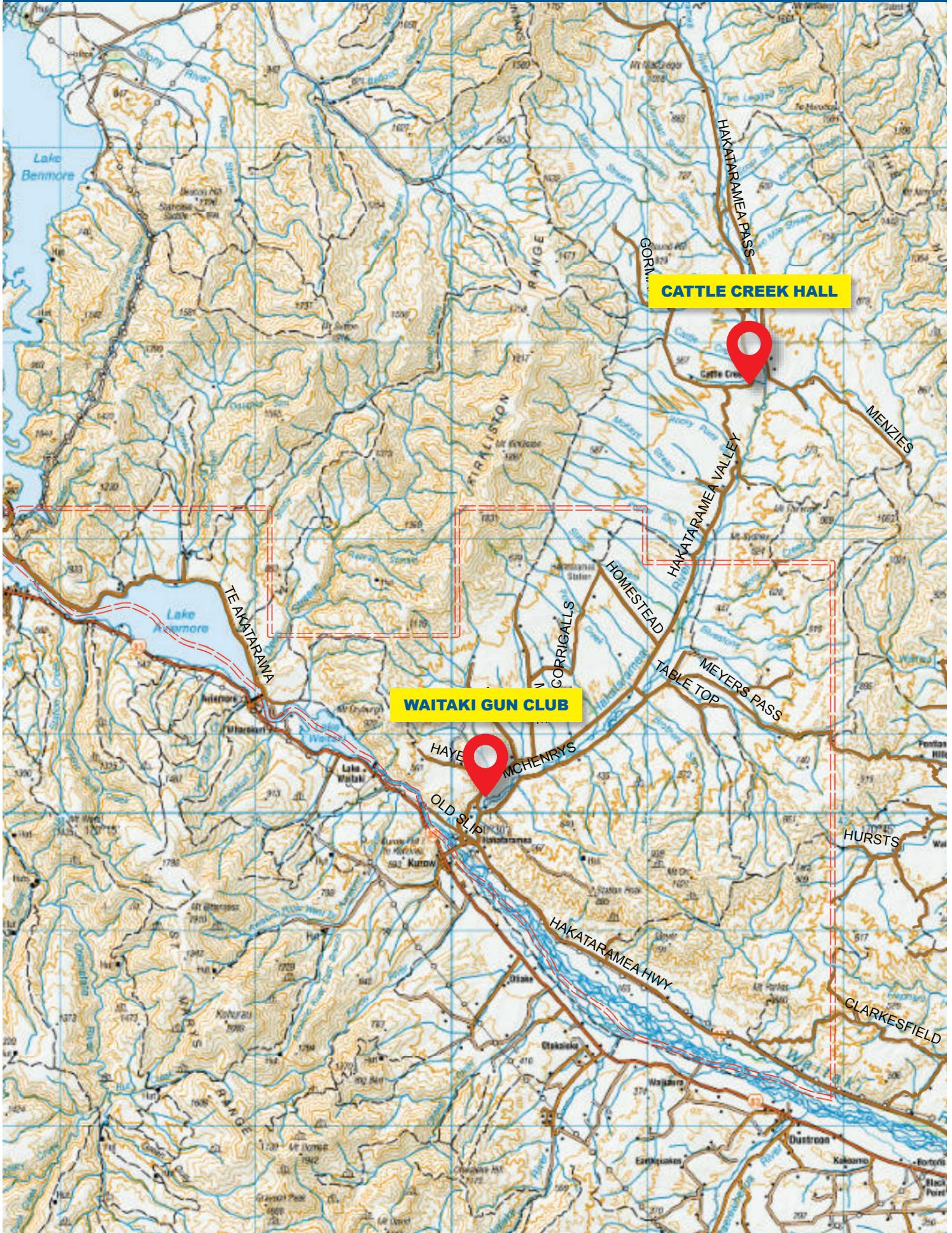
The Hakataramea and Cattle Creek community representatives have hand-held radios that are set on the WAIMATE channel. There are operation instructions with the radios. The radios can also operate from a car battery. Please note, radios are tested quarterly.

Monitoring of the WAIMATE channel, outside of an event, by the WDC is 0800hrs to 1630hrs Monday to Friday, however, monitoring will increase to 24/7 if the Emergency Operations Centre (EOC) has activated.

Plan review

This plan is to be reviewed and updated as required. Changes will be made to the electronic version of this plan, which is located at **waimatedc.govt.nz**.

Hakataramea and Cattle Creek topographical map



Potential emergencies for Waimate District

When a disaster happens you could be on your own for three days or more. You will need to rely on yourselves and the people around you to get through.

There is a lot you can do to prepare yourself and your family for a disaster. Making a plan and starting your disaster kit are two simple steps you can take today.

Listen to the radio or watch the TV for updates. Check on family and friends.



EARTHQUAKE



FIRE



STORM



PANDEMIC



DROUGHT



TSUNAMI



FLOOD



LANDSLIDE



SNOWSTORM

Radio station frequencies

The following radio station frequencies are used during emergencies

Waimate

More FM.	93.1FM
Radio NZ	101.1FM
Radio NZ	918AM

Waitaki Valley

More FM-Kurow.	96.8FM
More FM-Omarama.	90.9FM
More FM-Otematata	98.1FM

Oamaru

More FM.	100FM
The Hits	98.4FM
Newstalk ZB.	1395AM
Radio NZ	101.1FM

Timaru

More FM.	93.1FM
The Hits	94.7FM
Newstalk ZB.	1152AM
Radio NZ	101.1FM

**DURING AN EMERGENCY
IF YOUR LIFE IS AT RISK CALL 111**

Emergency Management office:

Waimate District Council

03 689 0000 (24hr)
www.waimatedc.govt.nz

Alert services:

Emergency mobile alert

National Emergency Management Agency

Smartphone app

Red Cross Hazard App (Apple and Android compatible)

Further information:

www.getready.govt.nz

www.getthru.govt.nz

[www.waimatedc.govt.nz/
environment-waste/civil-defence](http://www.waimatedc.govt.nz/environment-waste/civil-defence)