

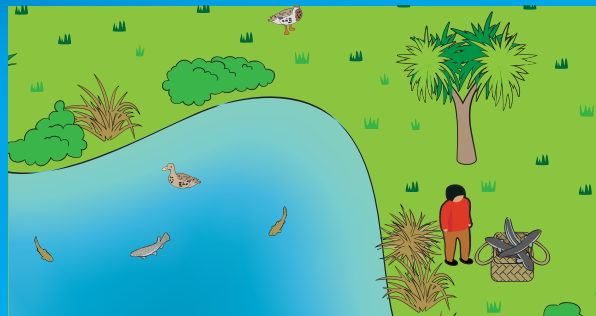
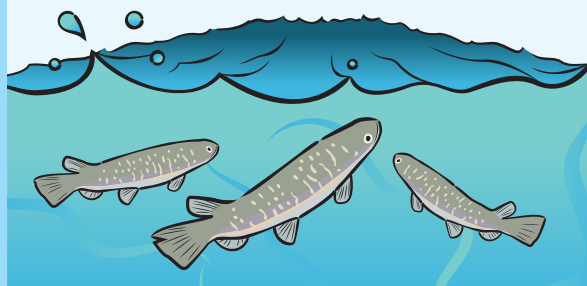


## BECOME A STORMWATER SUPERHERO TODAY!

Stormwater is water that runs off the land into our gutters. When it rains, stormwater flows from the roofs, footpaths, roads, carparks, and straight into the nearest stream – unfiltered.

On its journey, the water picks up lots of nasty pollutants that end up in our rivers and streams. It flows untreated into our waterways and out to sea.

Let's put on our capes and become Stormwater Superheroes by helping to clean up our waterways and safeguard mahinga kai species and habitat.



## MAHINGA KAI

Mahinga kai is food and other natural resources, the habitat they are found in, and the cultural customs associated with these places. It is the relationship between all elements that help sustain life, including kōura (crayfish), īnanga (whitebait), harakeke (flax), wetlands, waterways, native vegetation and insects.

Mahinga kai species can be enhanced when we protect the environment that sustains them, like streams and rivers. Mahinga kai abundance can be a key indicator to the direct health of a stream or area.

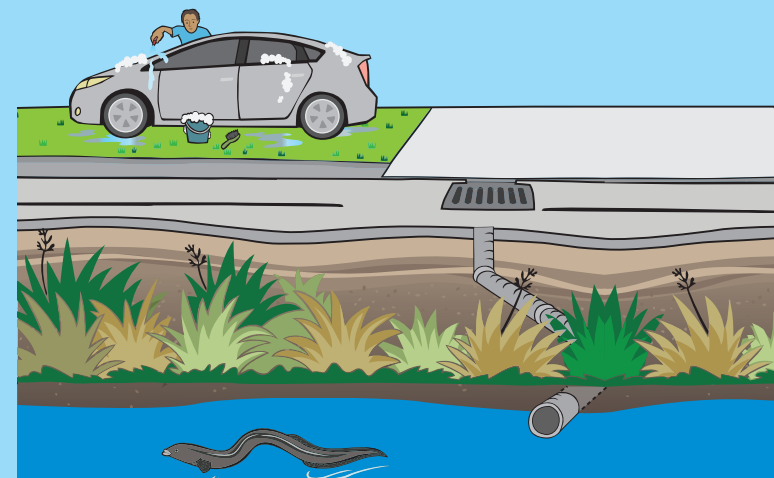
We are all connected to the land and waterways – our waterways are our lifeline. Tōitu te marae o Tane, Tōitu te marae o Tangaroa, Tōitu te Iwi - when the realm of Tāne and the domain of Tangaroa are sustained, so too are people.

We all need to do our part to stop pollutants getting into streams, rivers, lakes and eventually the oceans, to safeguard mahinga kai species and their habitat for current and future generations.

*Brought to you by the Lower Waitaki South Coastal Canterbury Water Zone Committee, a community-led committee supported by councils.*



## BE A STORMWATER SUPERHERO AND LOOK AFTER OUR WATERWAYS



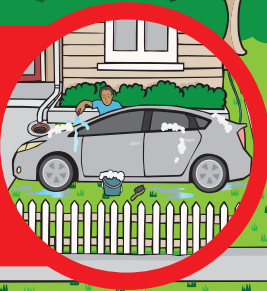
For more information on stormwater go to:  
[www.ecan.govt.nz/stormwater](http://www.ecan.govt.nz/stormwater)

E22/8147

# Help do your bit and keep our stormwater drains clean by following these handy tips:

## Cleaning the car?

Wash it on the grass verge so the grass filters out the pollutants.



## Painting around the house?

Wash your brushes in the laundry sink, not directly into the stormwater drain as they may link up with the stormwater network or your local stream.



## Taking the dog for a walk?

Take a bag with you, pick up your dog's poo and dispose of it in the red rubbish bin. Pick up any litter you see when out and about and place it in the appropriate bin when you can.



## Doing some landscaping?

Keep dirt on your property during construction or landscaping, so it doesn't make its way into local streams and rivers.



## Putting the rubbish out?

Check the gutter outside, sweep and pick up any rubbish and leaves and put it in the appropriate bin for collection.



## Brake pads wearing out?

Ask for copper free pads when you get them replaced. Most of the brakes fitted to our vehicles contain copper and other heavy metals. For shorter trips, try to bike, walk, run, or take public transport.

